

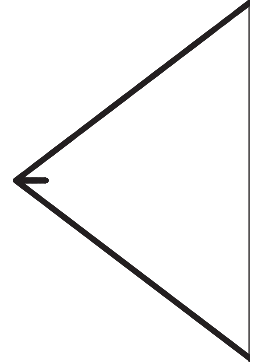


Paperbag Shorts and Trousers

PROJECT DESIGN © LOVE PRODUCTIONS 2022
THIS DESIGN IS PROTECTED BY COPYRIGHT
AND MUST NOT BE MADE FOR RESALE.

1.5-CM (5/8-IN.) SEAM ALLOWANCE INCLUDED (UNLESS OTHERWISE STATED)

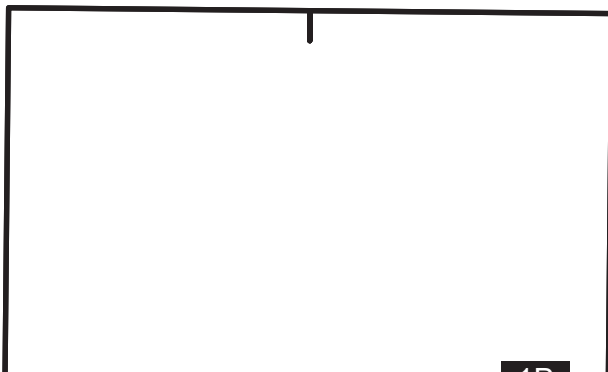
TEST SQUARE: 10CM x 10CM / 4 INCHES x 4 INCHES



1A

SIZING KEY

—————	8
.....	10
- - - - -	12
- . - . - .	14
- - - - -	16
- - - - - .	18
— — — — —	20
—————	22



1B

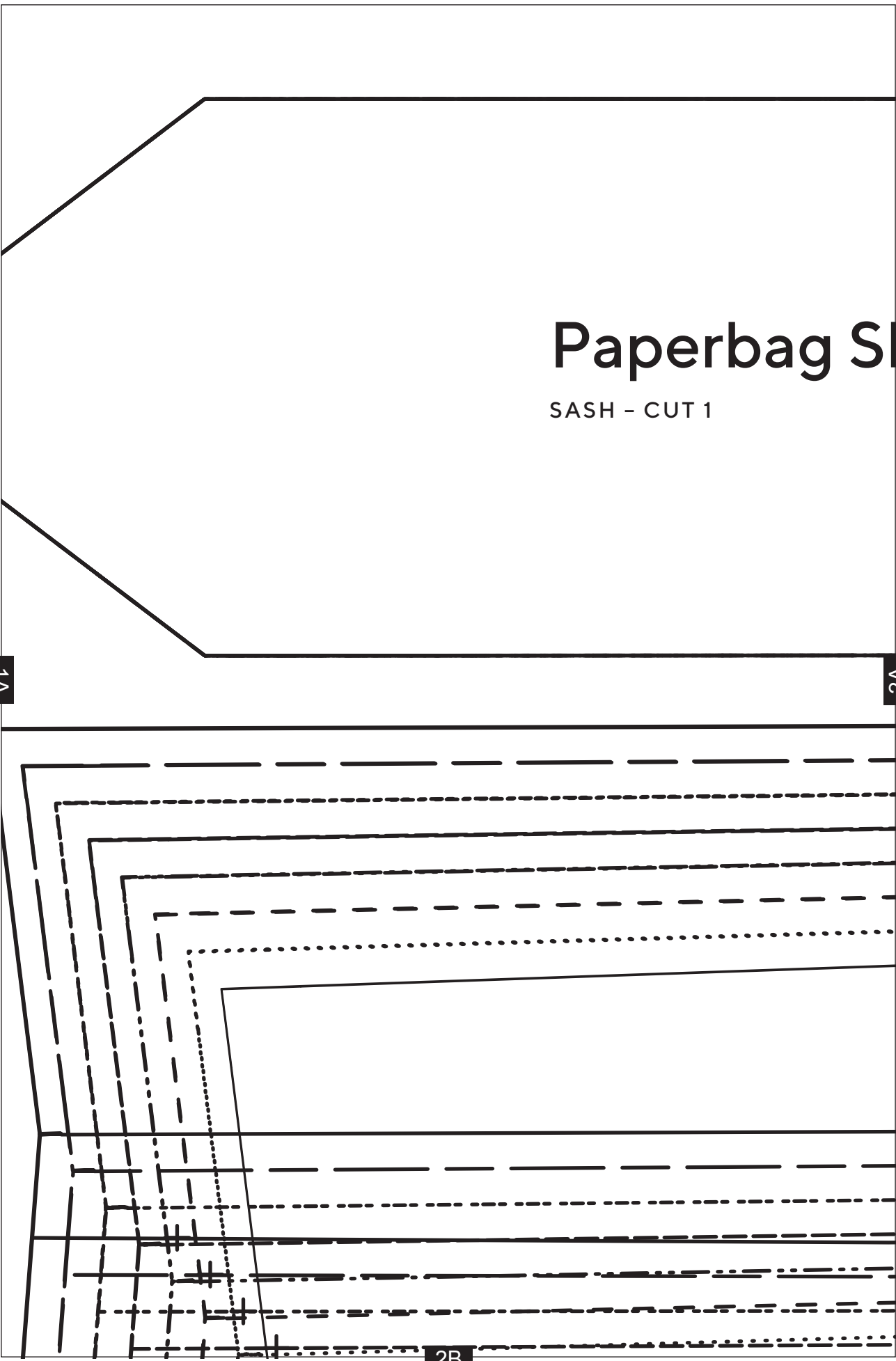
Paperbag Sl

SASH - CUT 1

1A

2A

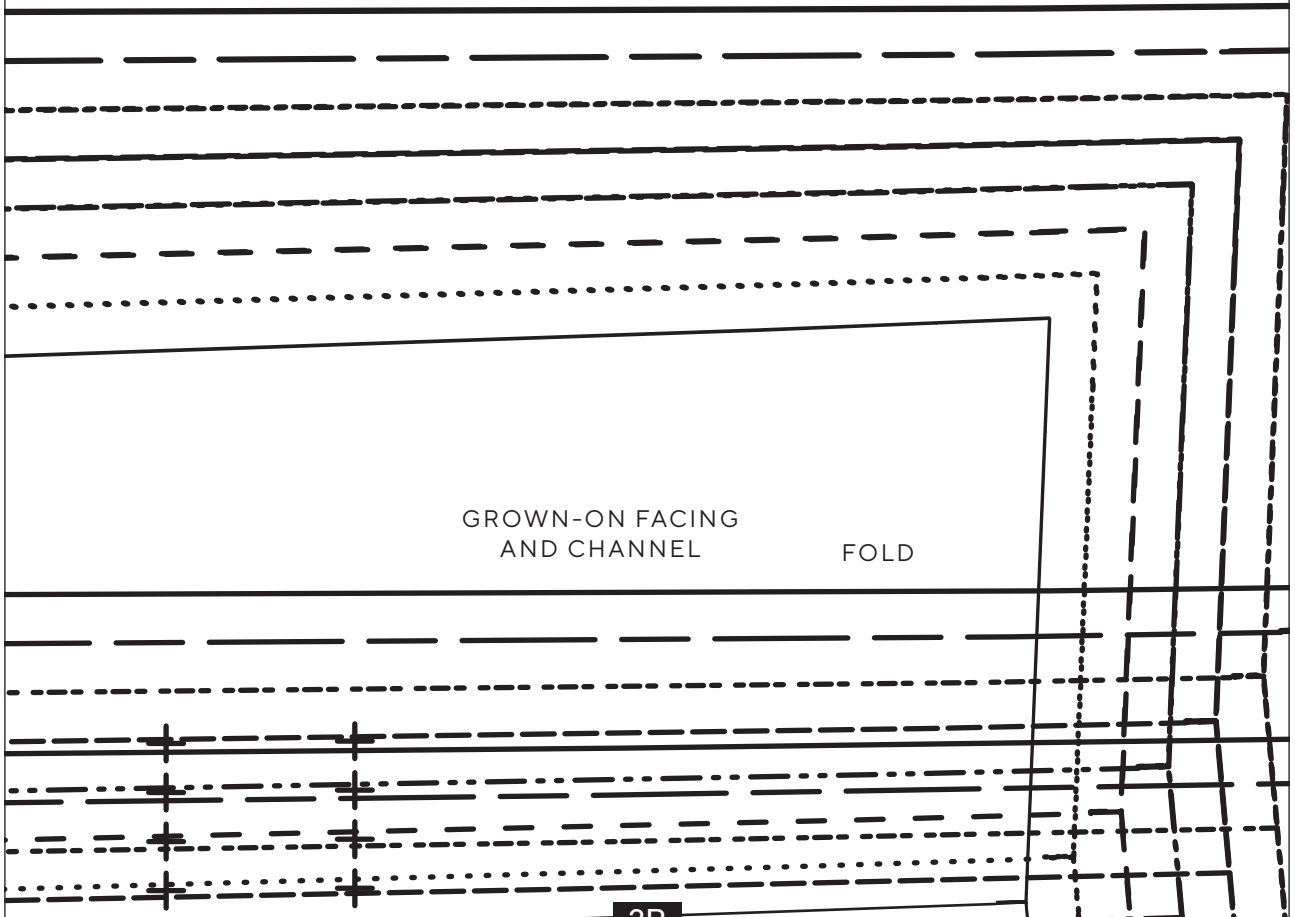
2B



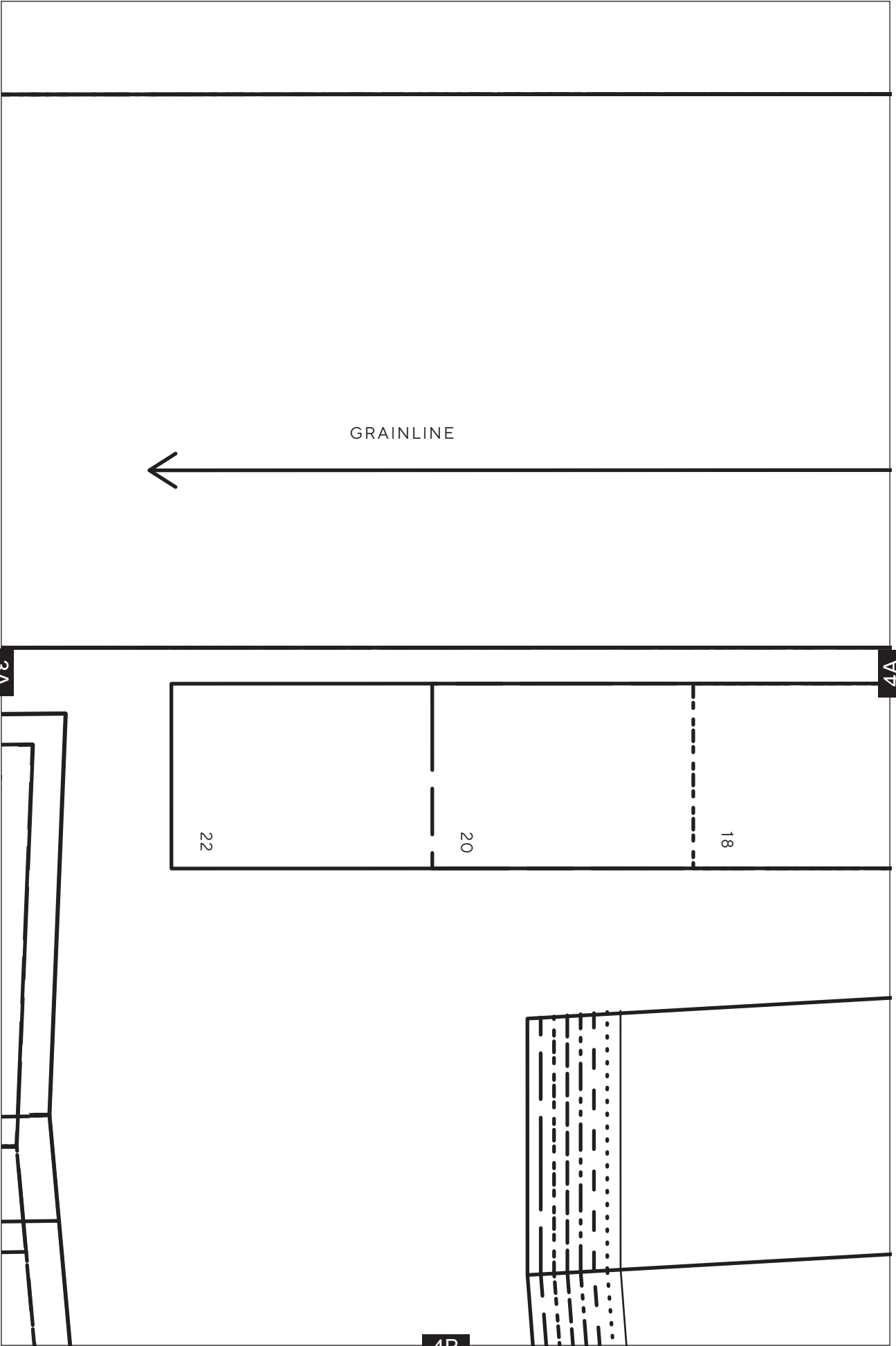
Shorts and Trousers 1A

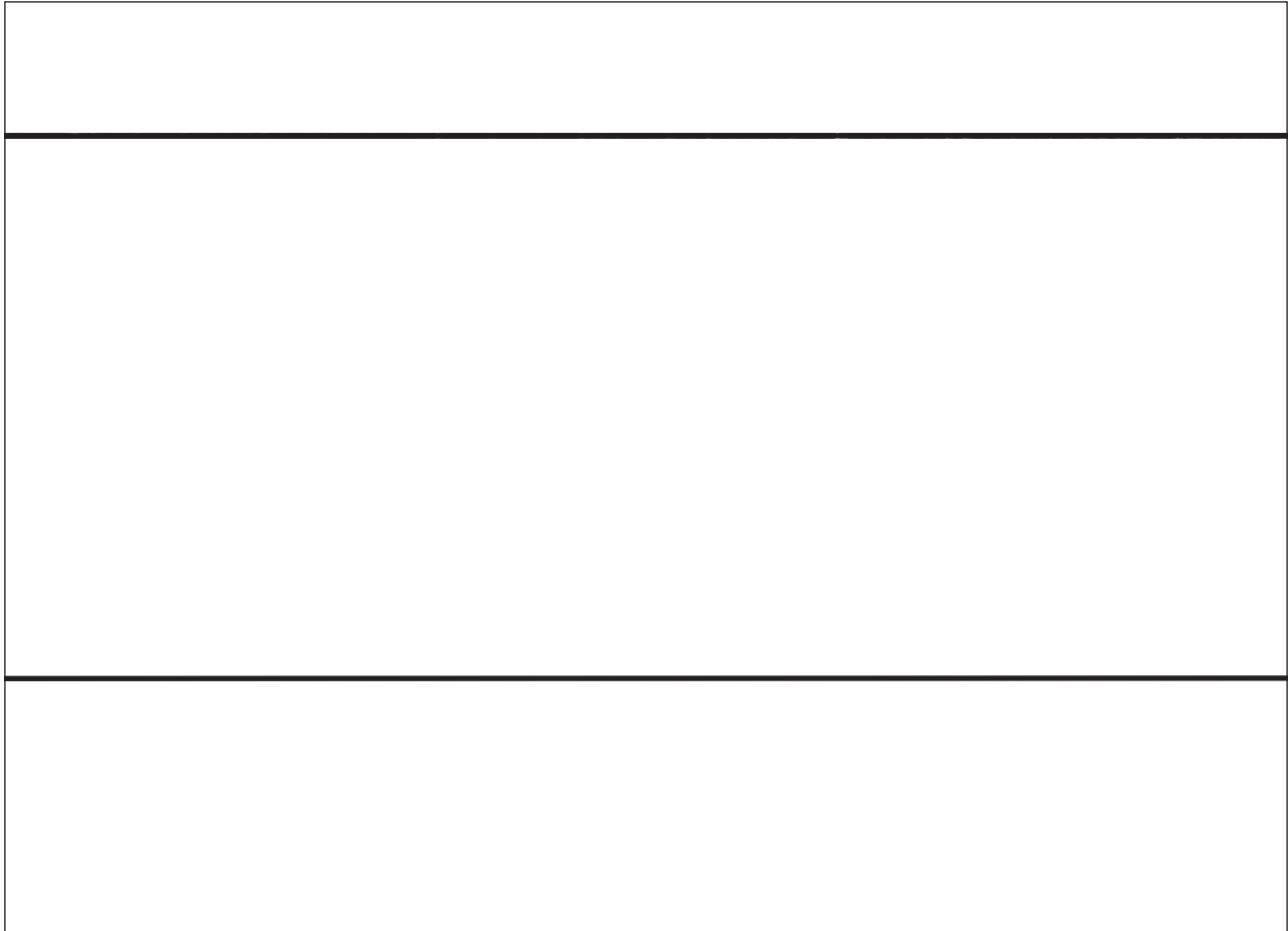
2A

3A



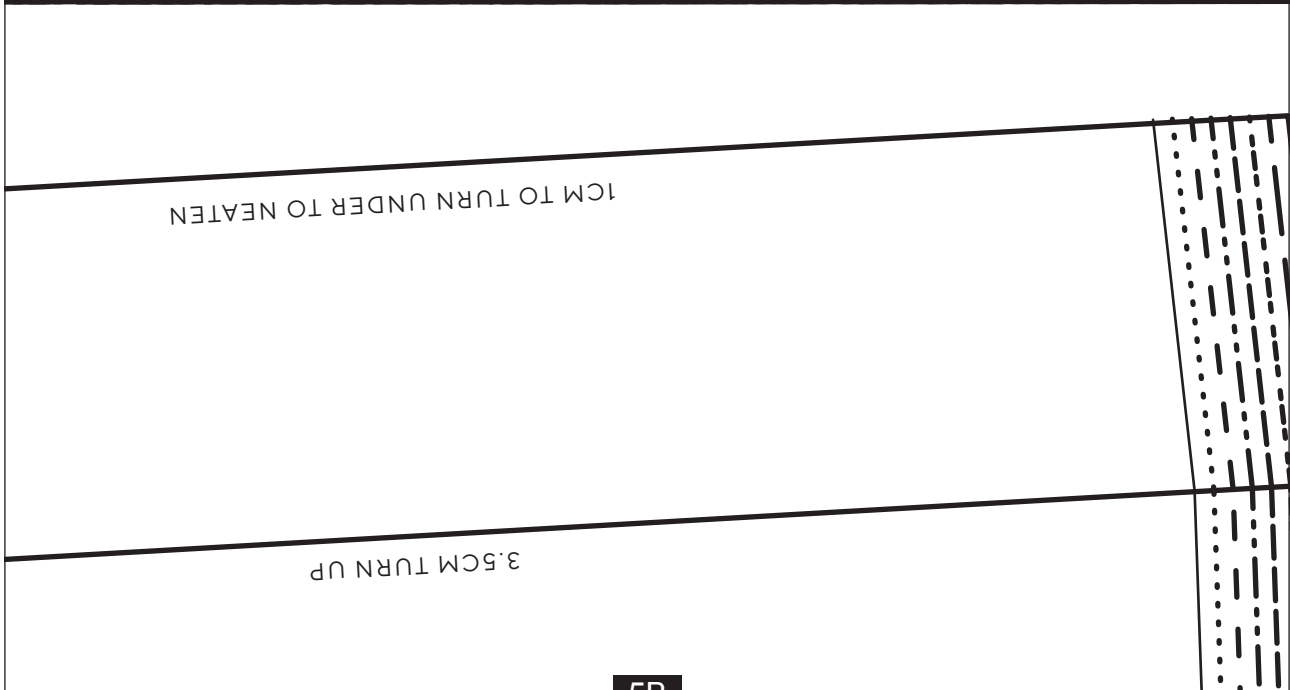
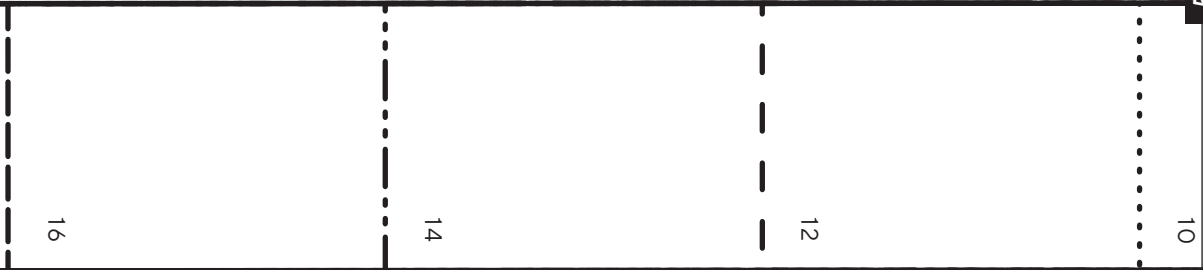
3B





4A

5A



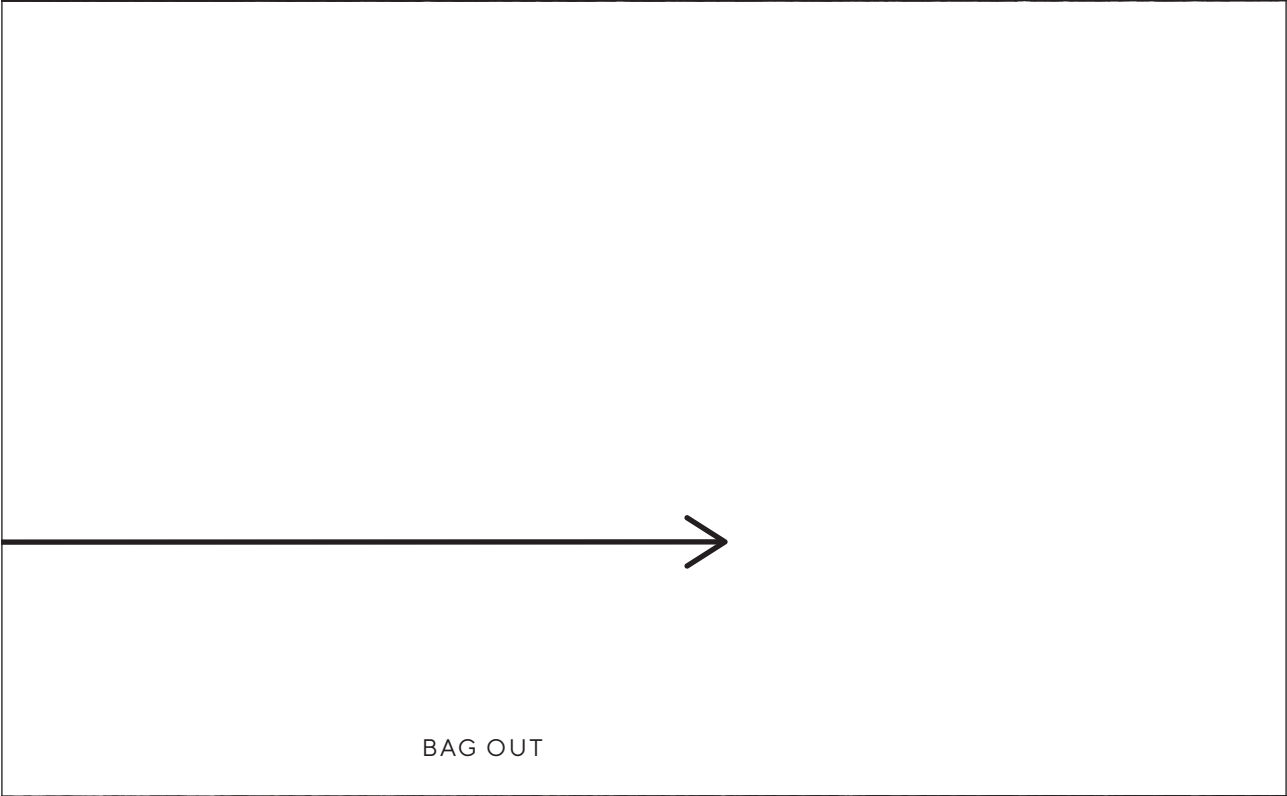
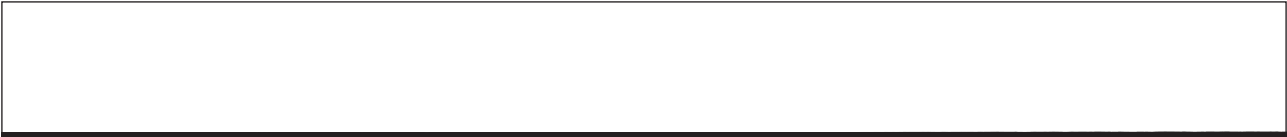
5B

5A

6A

8

6B



BAG OUT

7A

8A

orts and Trousers
CUT



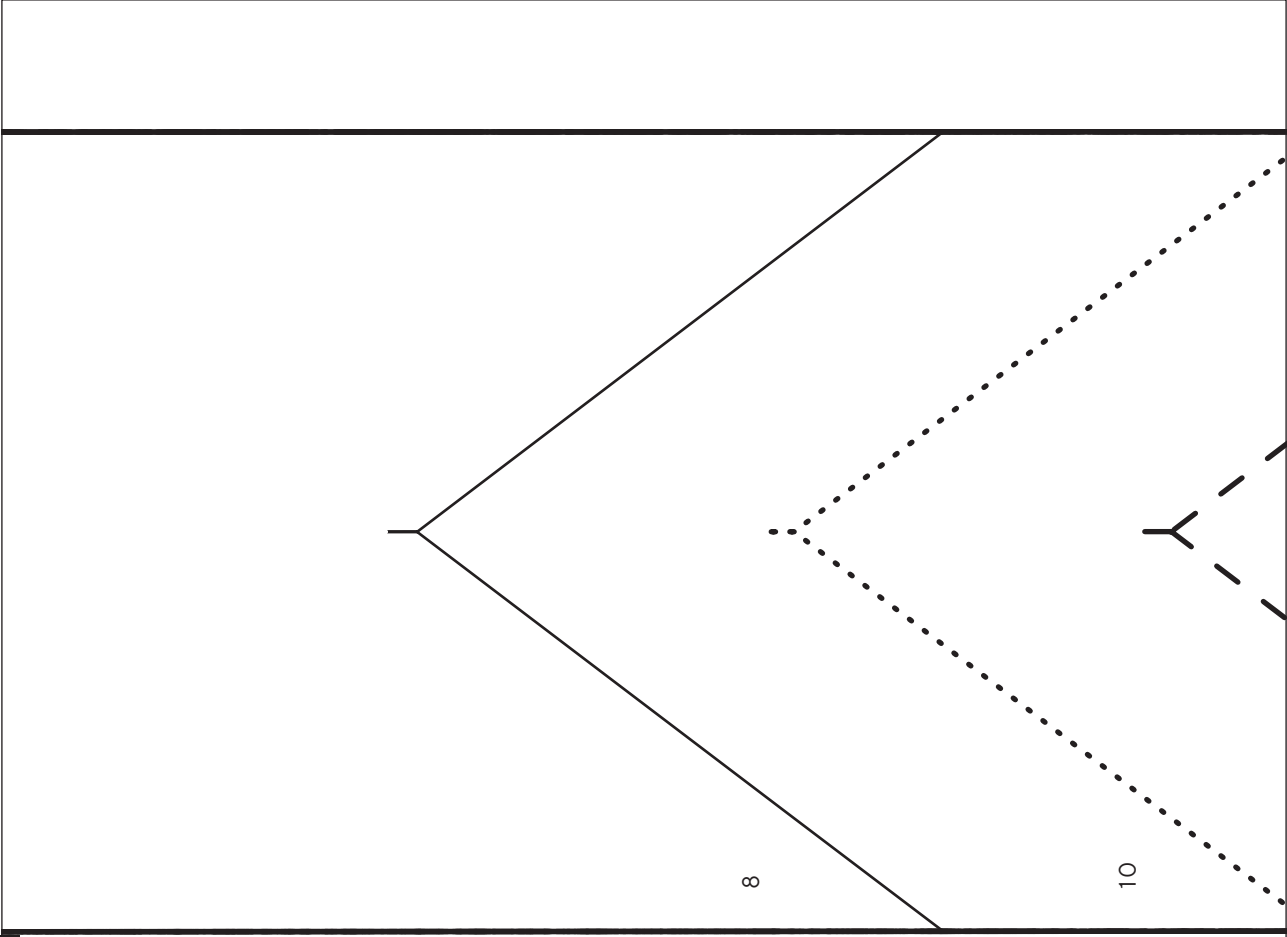
8A

ELASTIC TEMPLATE - DO NOT

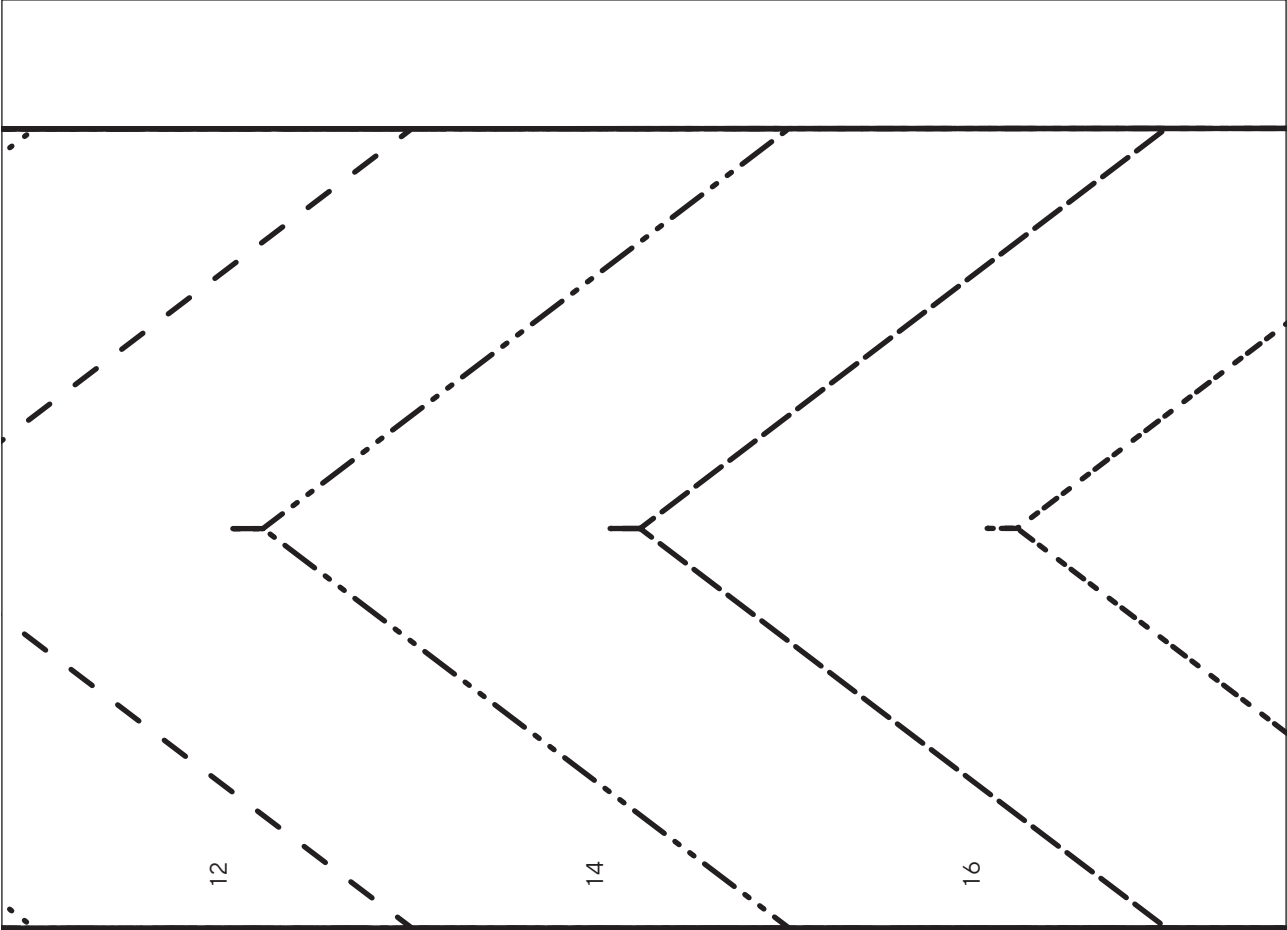
Paperbag Sh

9A

9A

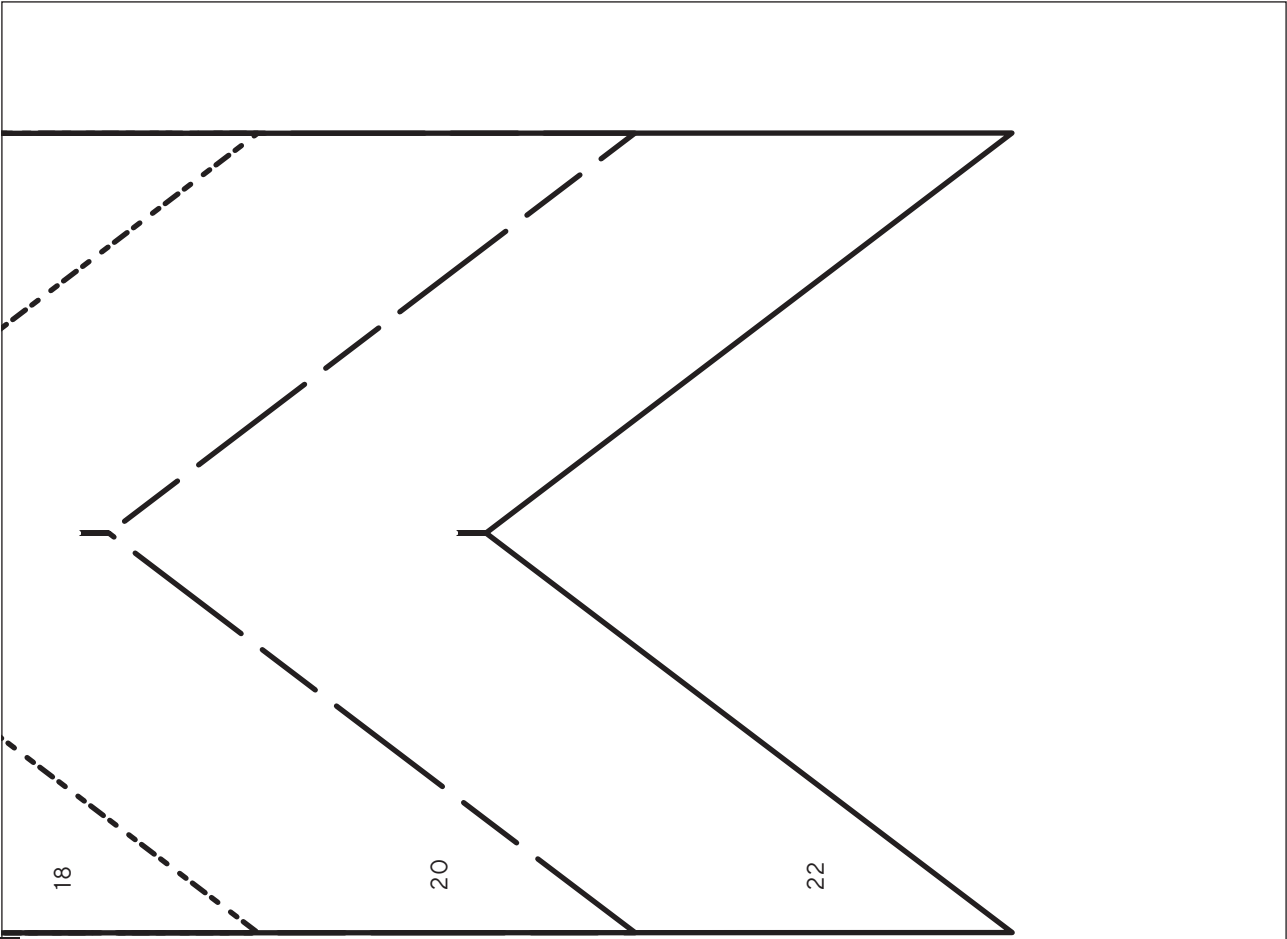


10A



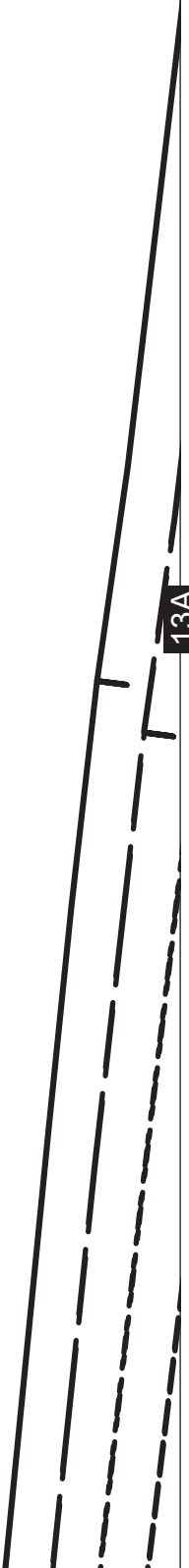
10A

11A



11A

13A



1B



13B

Paperbag Shorts and Trousers

BELT LOOP - CUT 1

5 X BELT LOOPS

2B

13A

14A

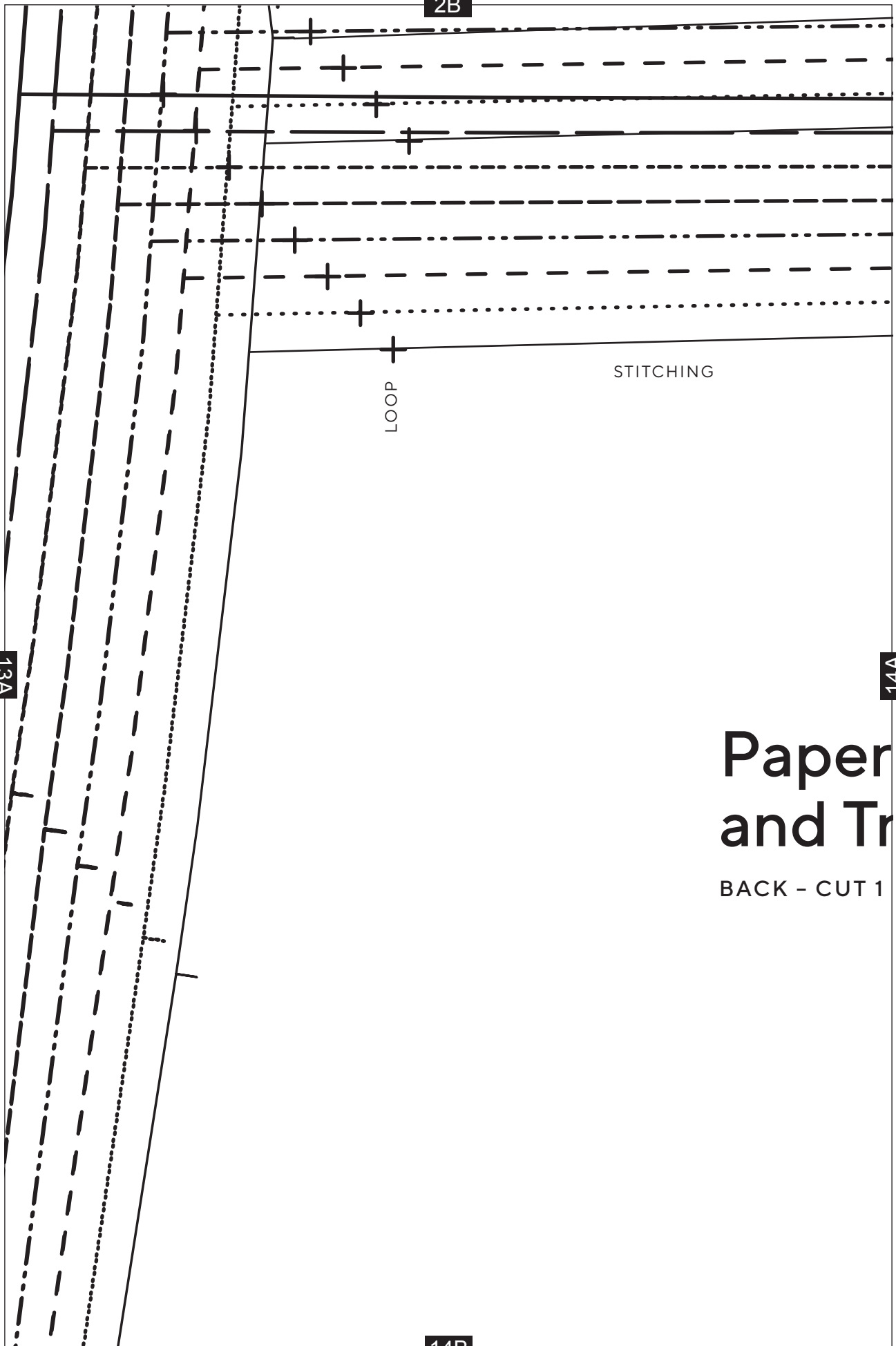
LOOP

STITCHING

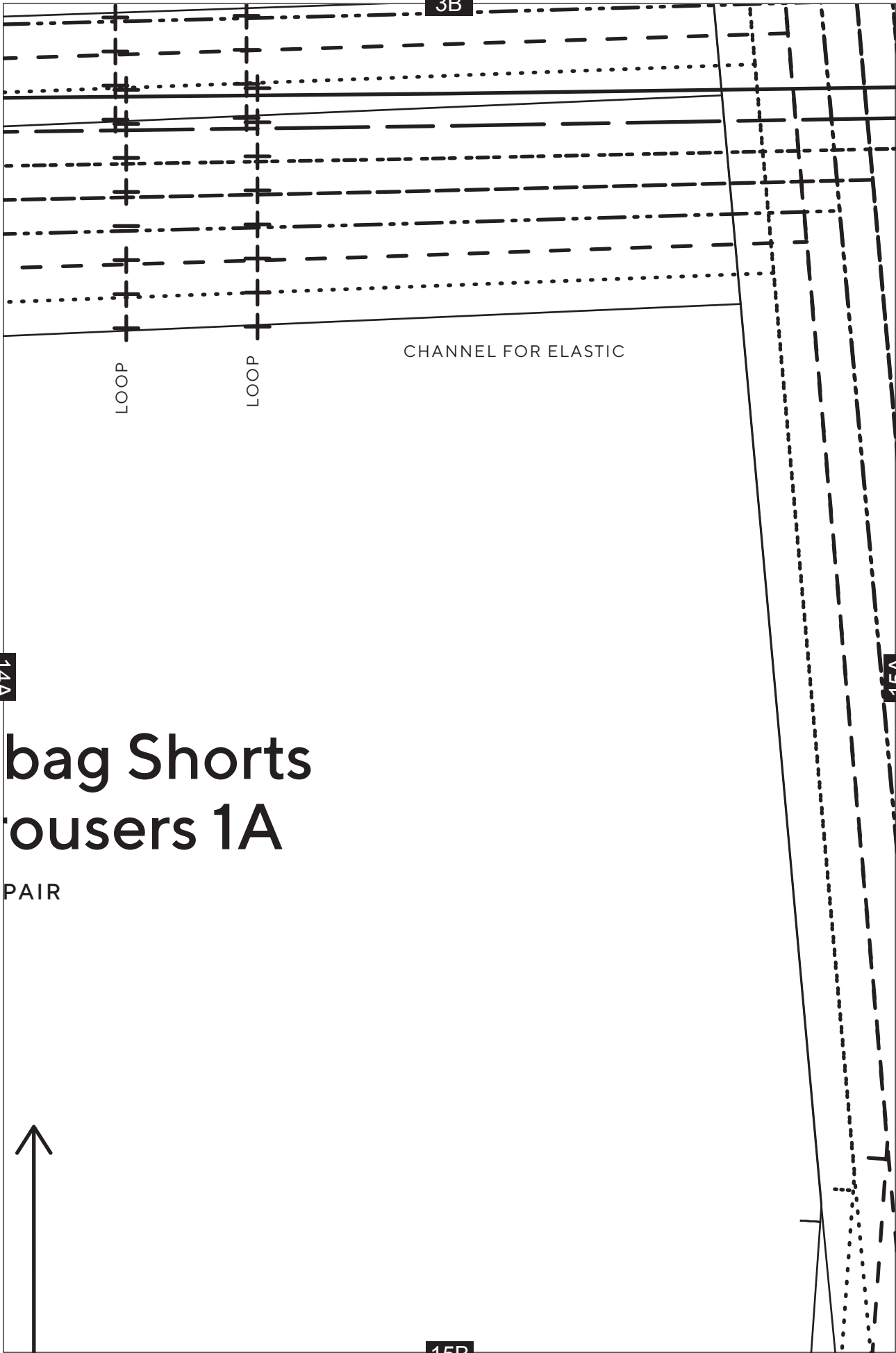
Paper and Tr

BACK - CUT 1

14B



3B



LOOP

LOOP

CHANNEL FOR ELASTIC

14A

bag Shorts trousers 1A

PAIR



15A

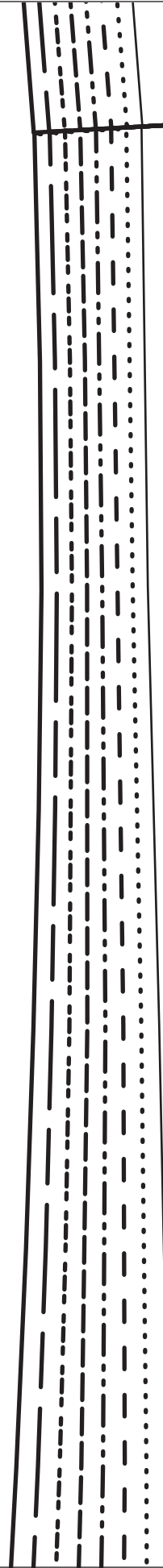
15B

4B

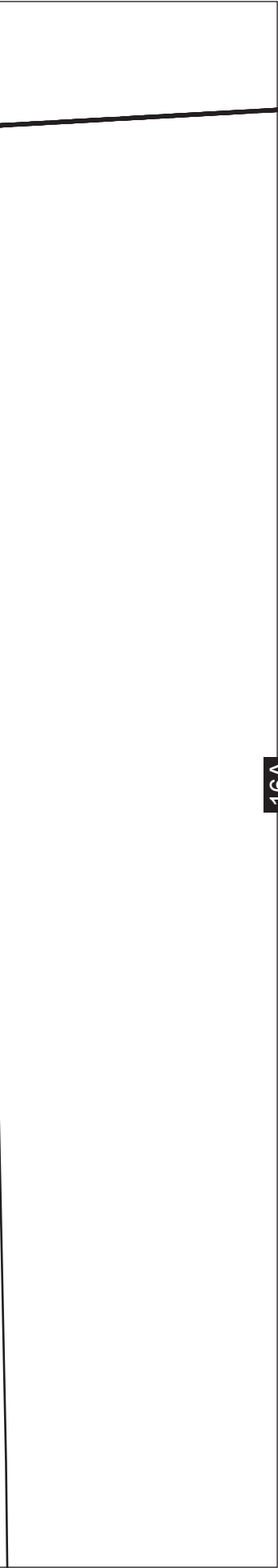
15A



16B



16A

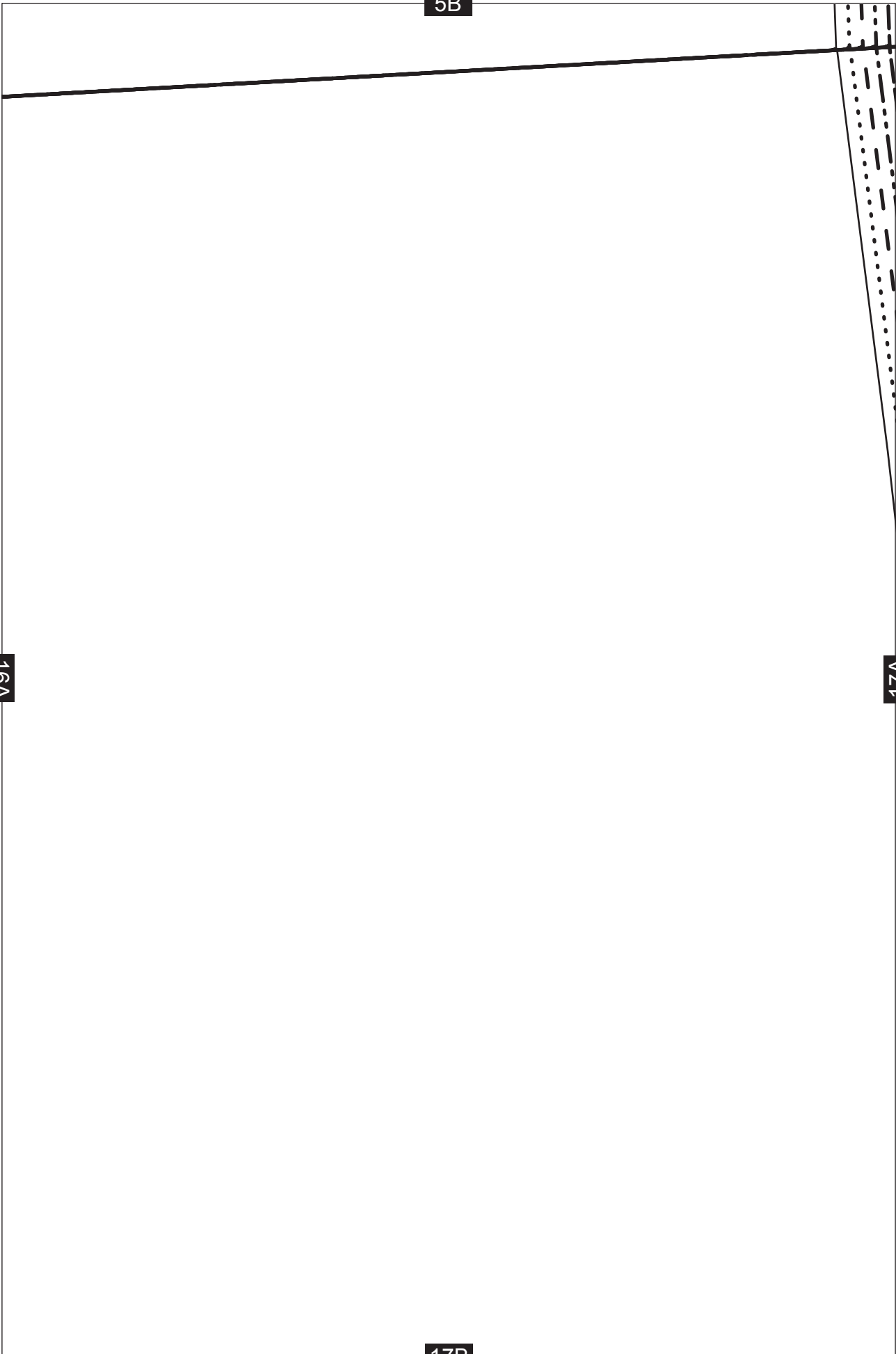


5B

16A

17A

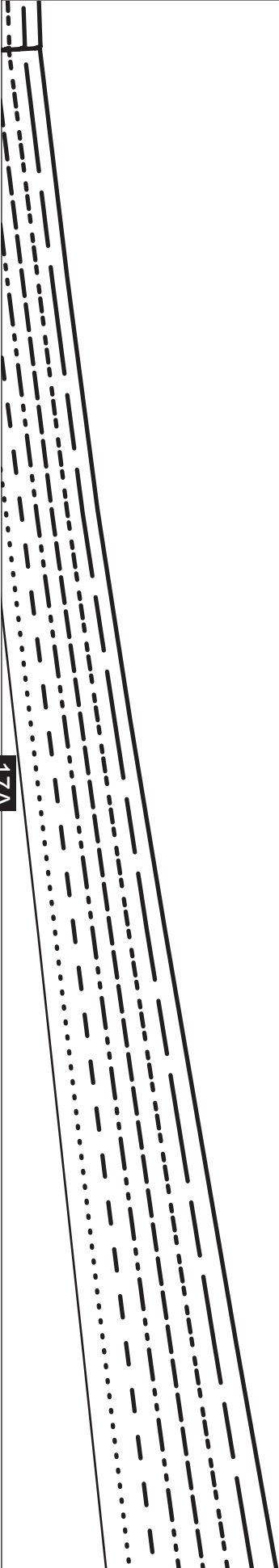
17B



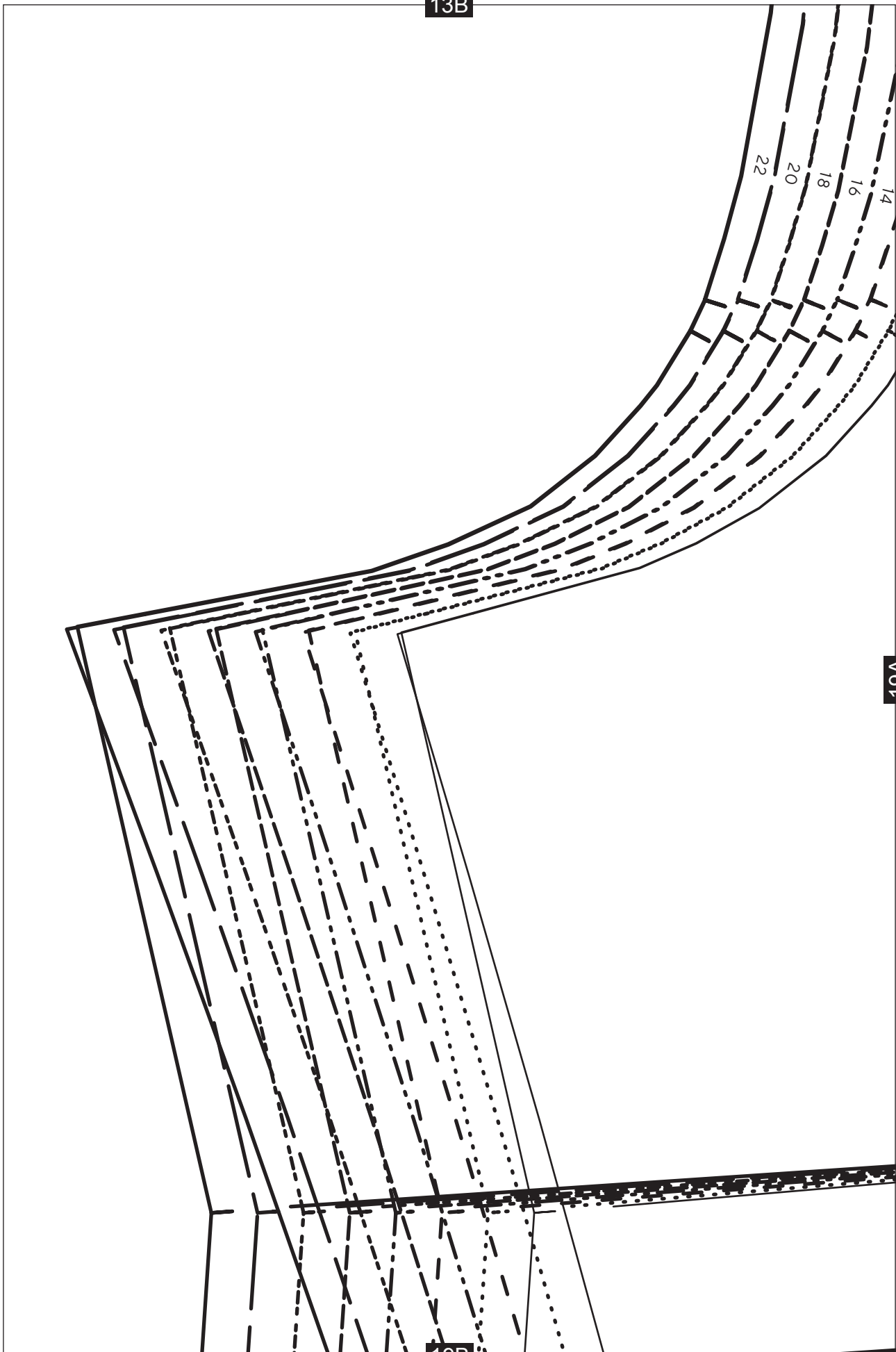
6B

17A

18B



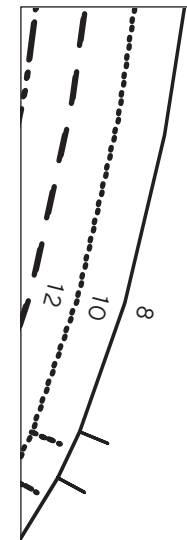
13B



19A

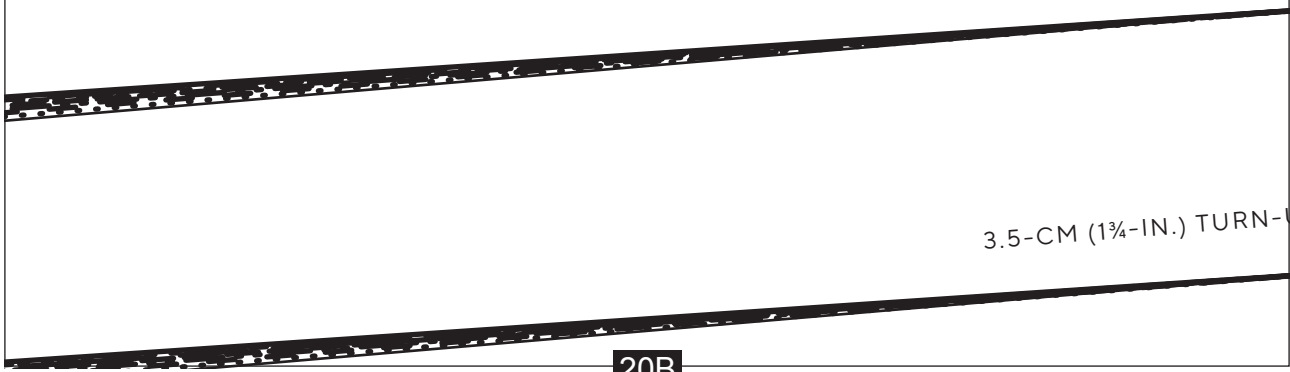
19B

14B

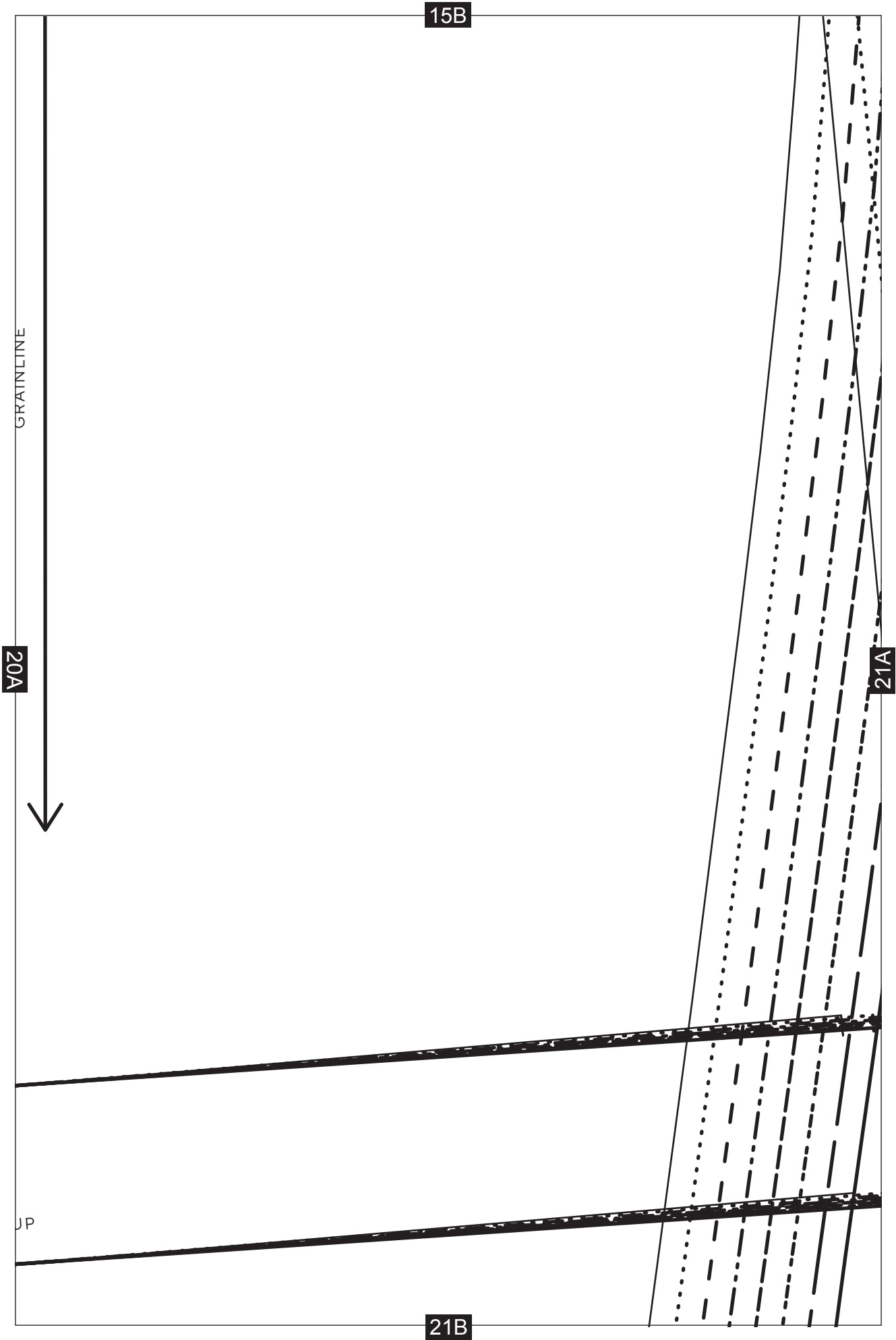


19A

20A



20B

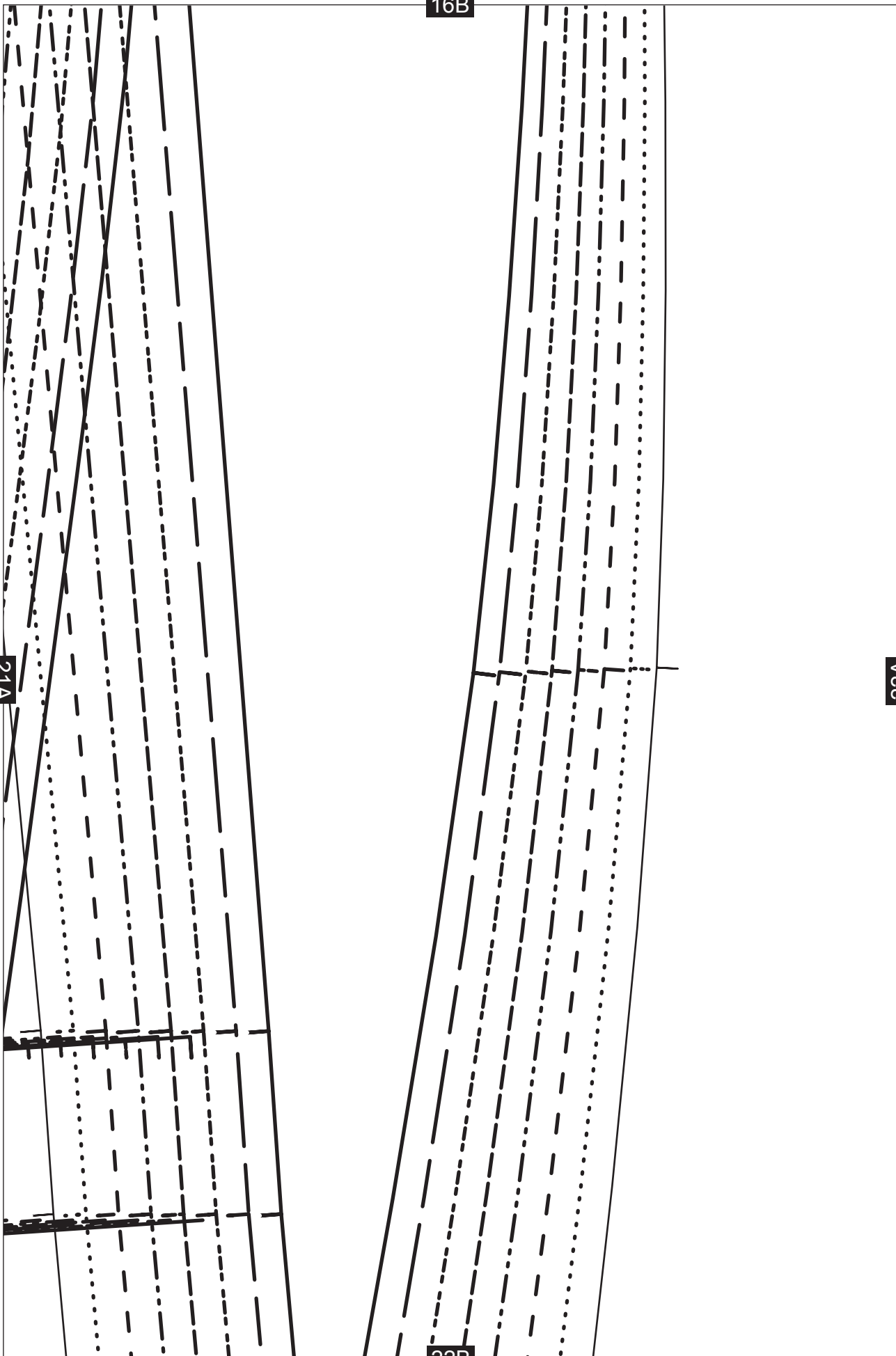


16B

21A

22A

22B



17B

22A

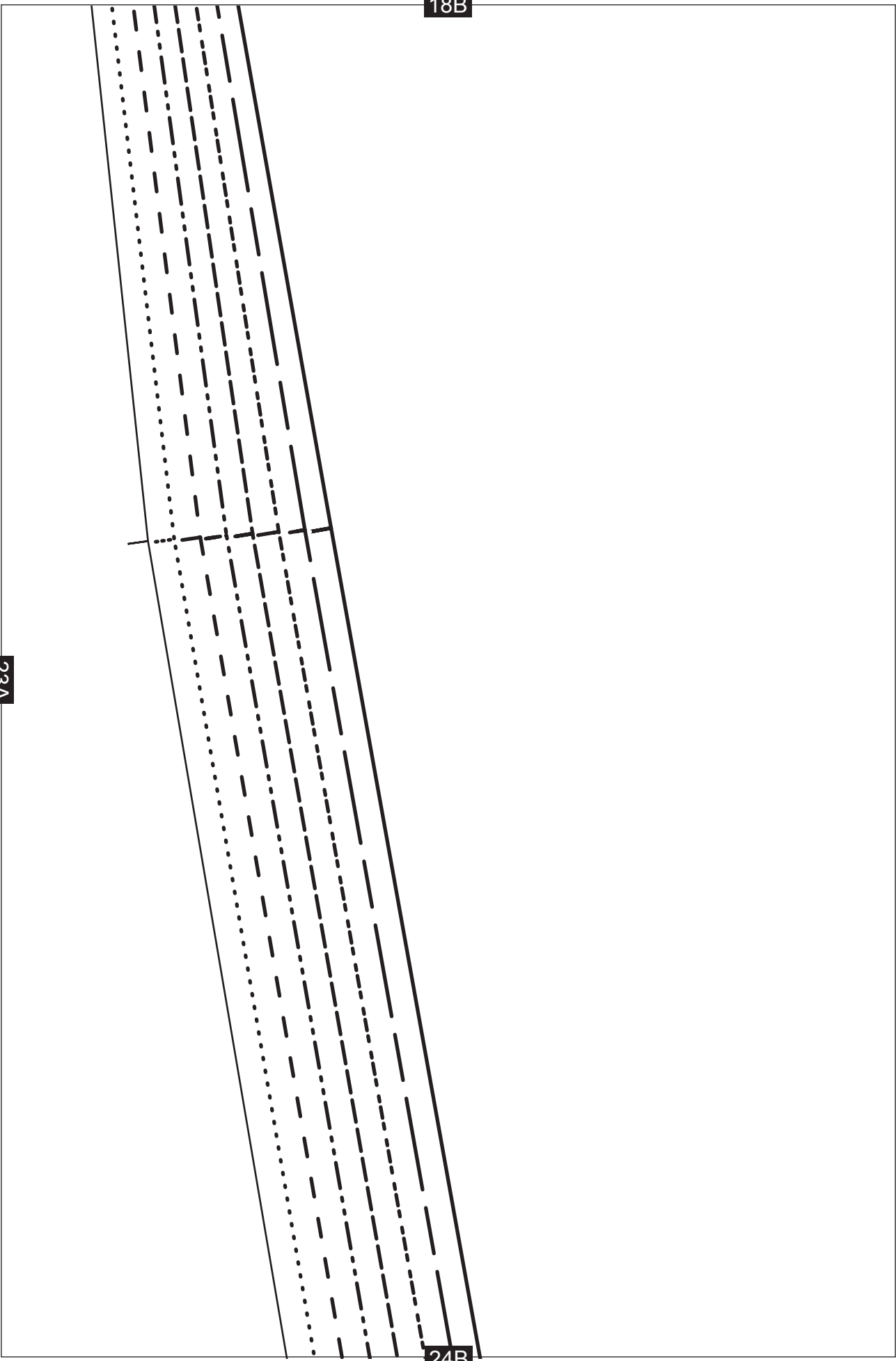
23A

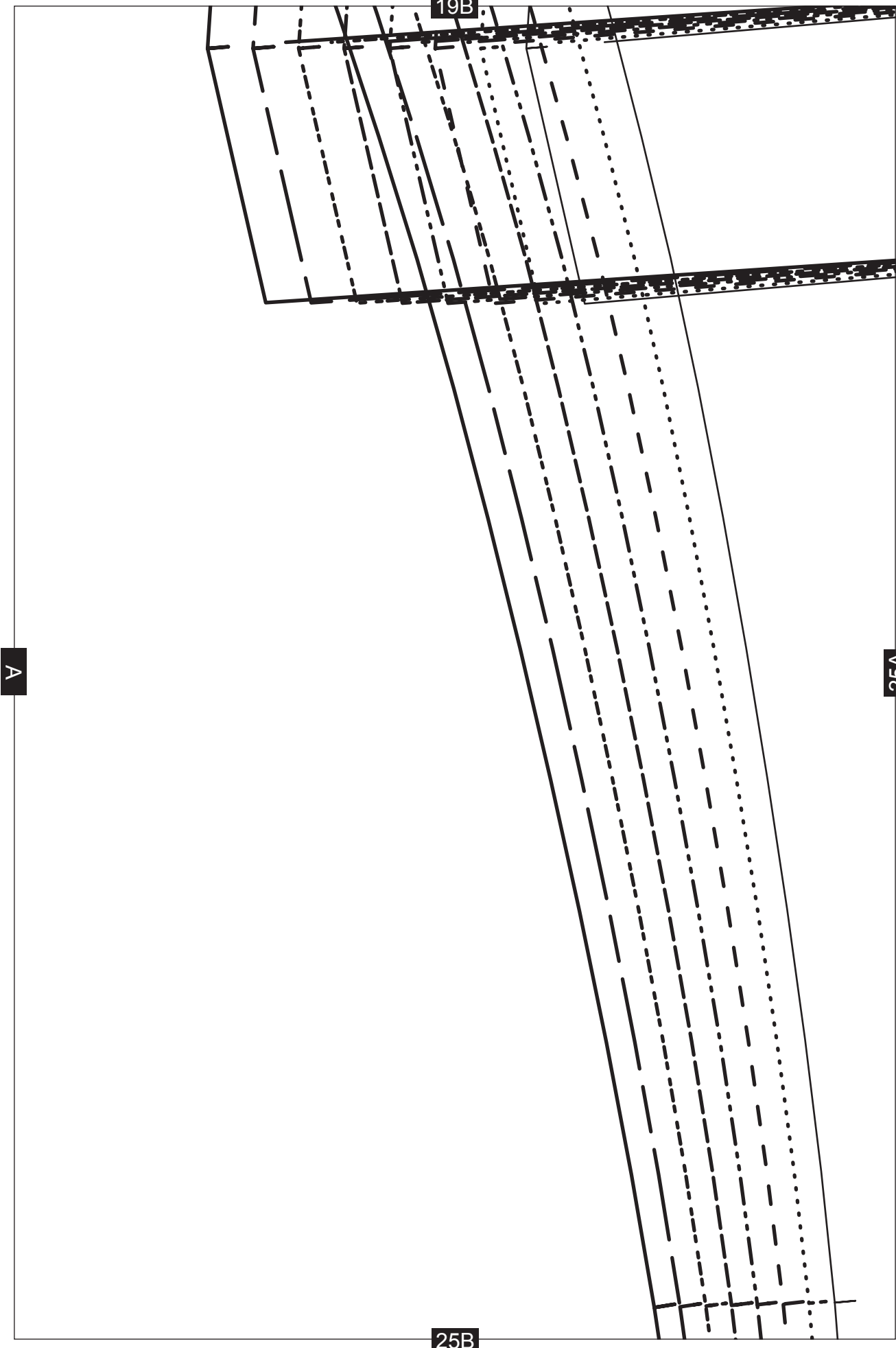
23B

18B

23A

24B





20B

1 CM ($\frac{3}{8}$ IN.) TO TURN UNDER TO

25A

26A

26B

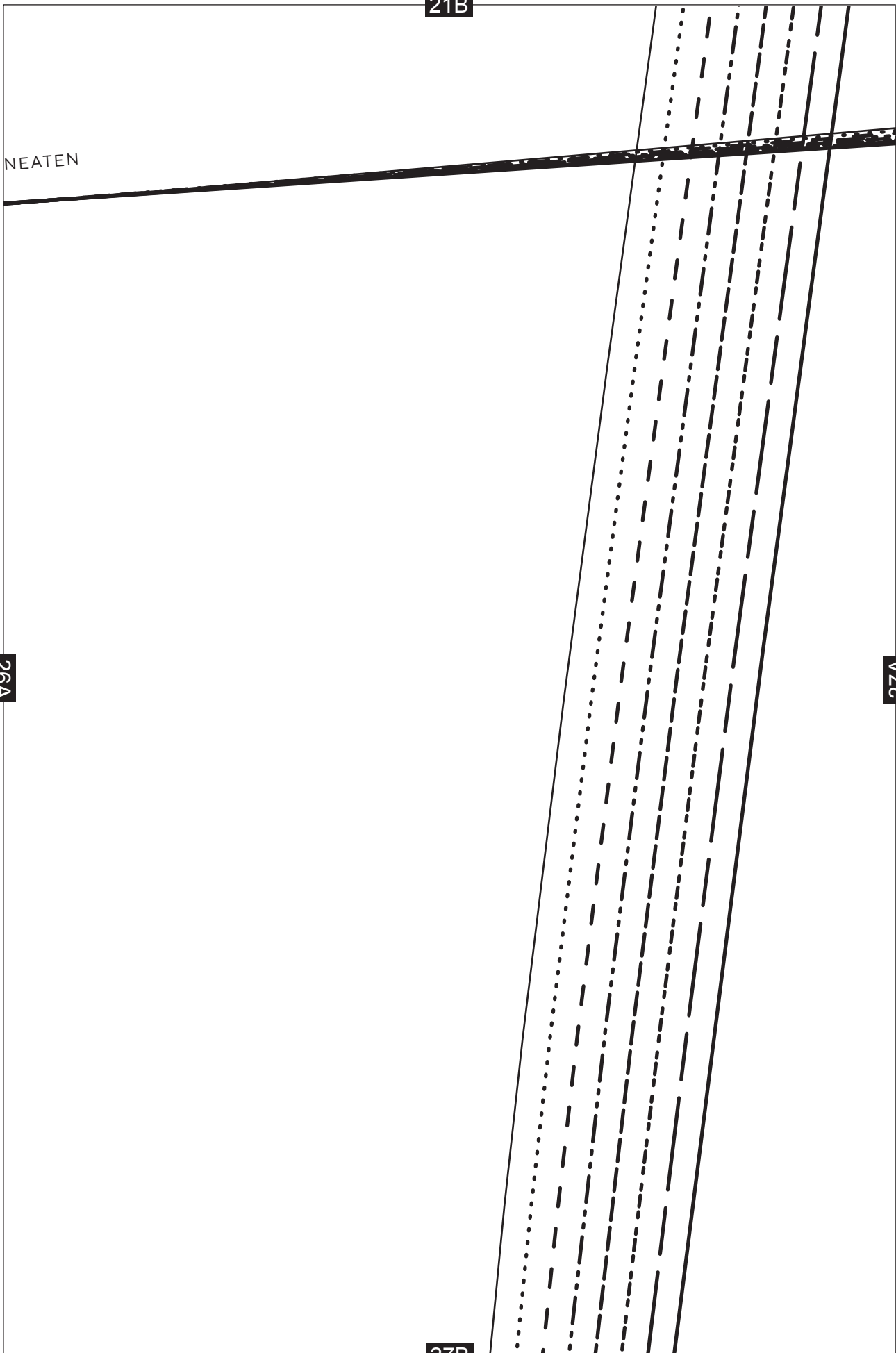
21B

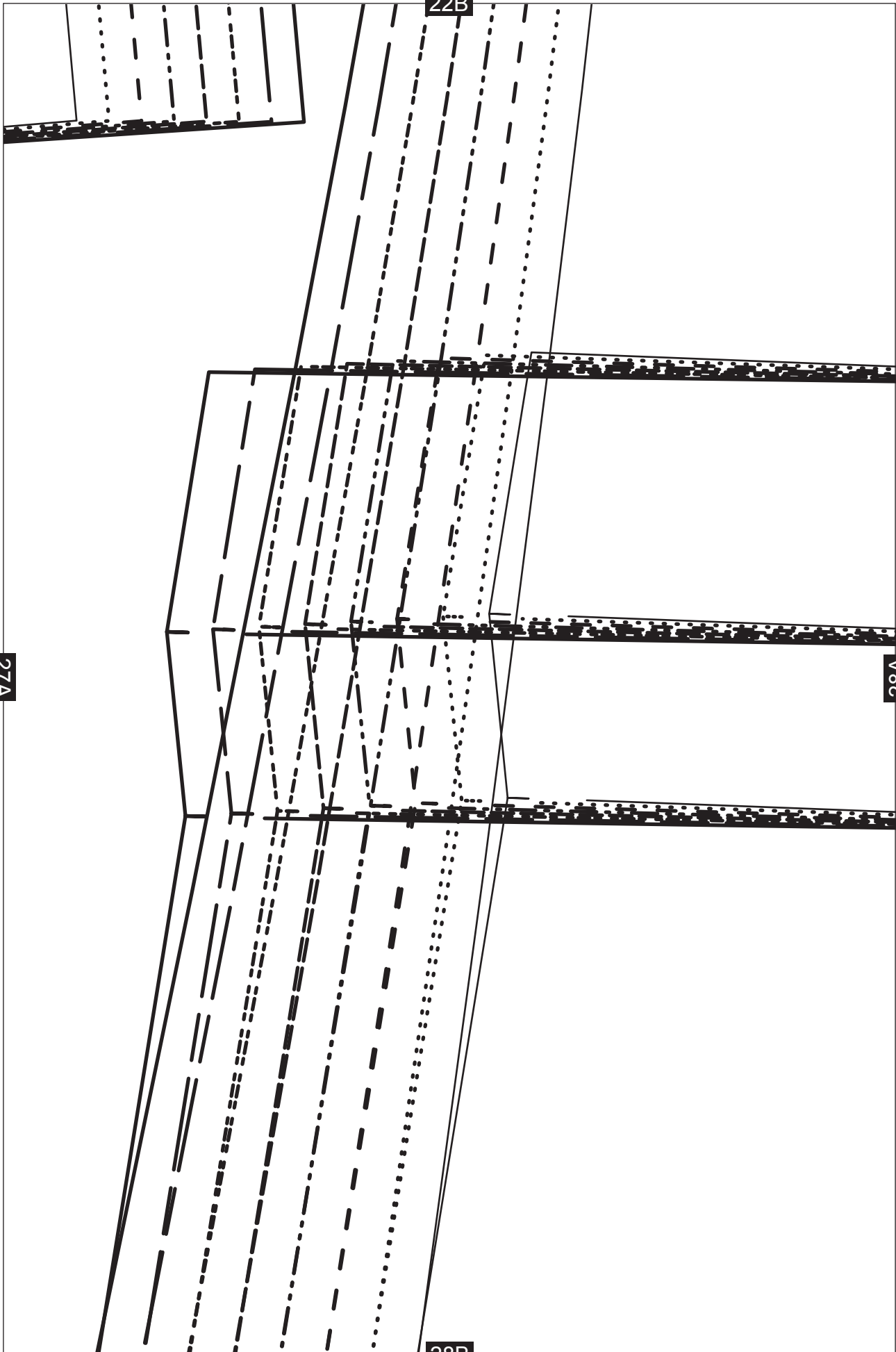
NEATEN

26A

27A

27B





23B

1 CM ($\frac{3}{8}$ IN.) TO TURN UNDER TO NEATEN

3.5-CM ($1\frac{1}{4}$ -IN.) TURN-UP

28A

29A

and II
FRONT - CUT

29B

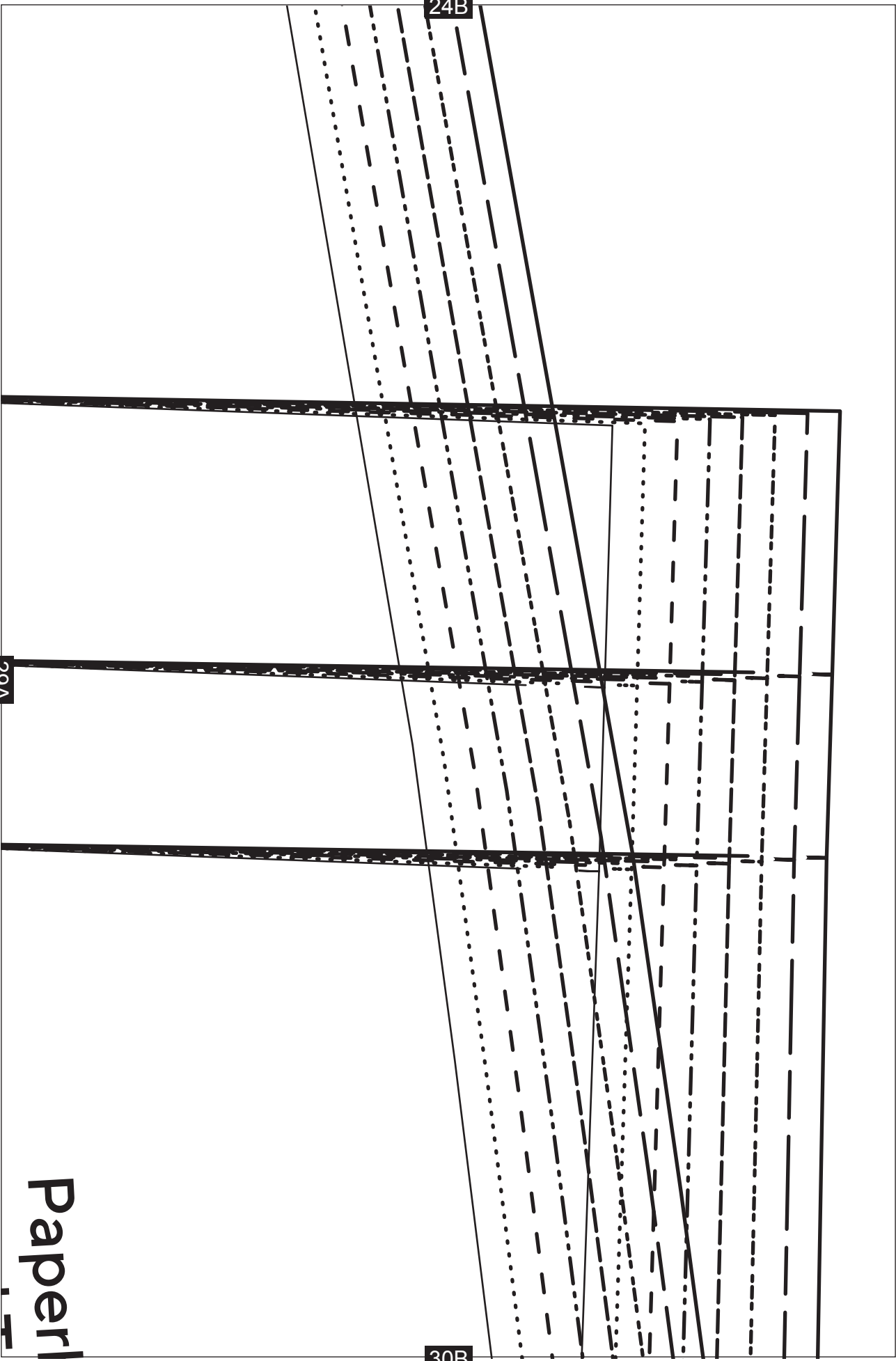


24B

29A

30B

Paper 1

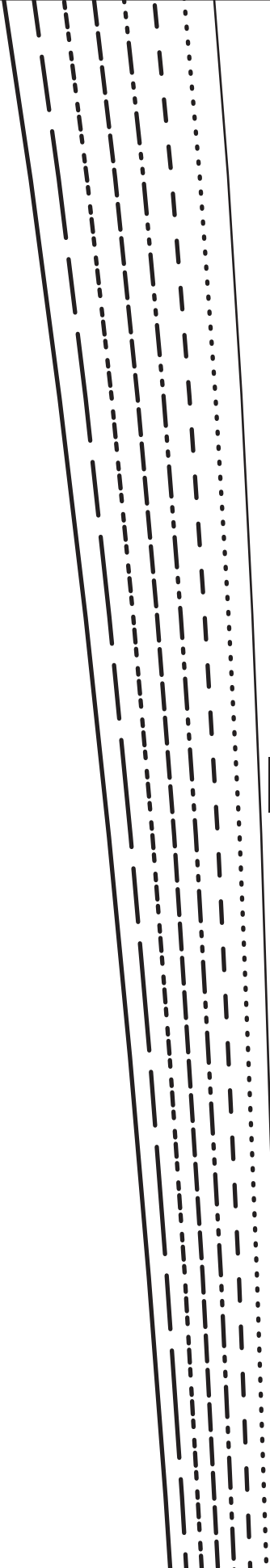


25B

A

31A

31B



26B

31A

32A

32B

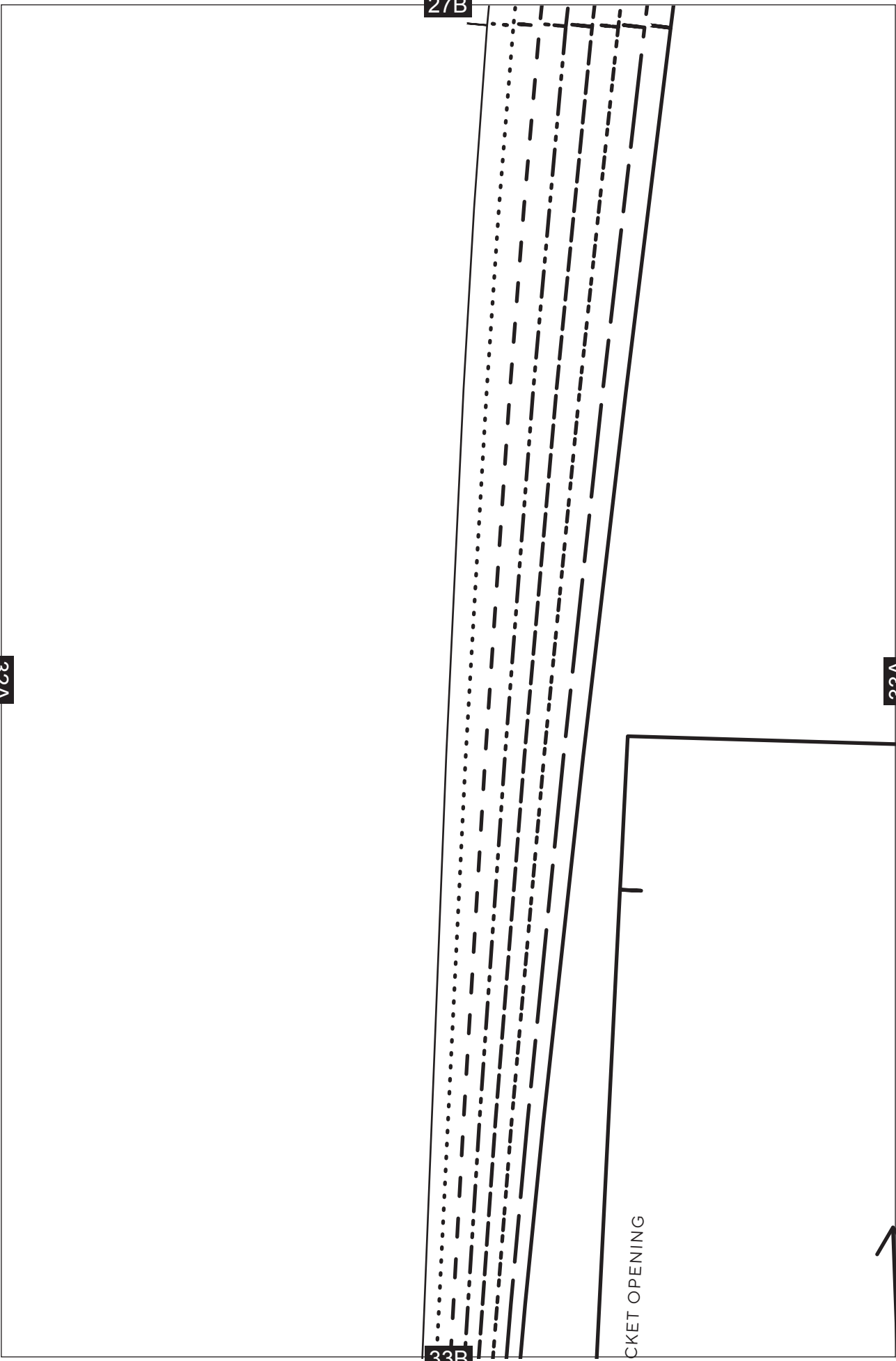
32A

27B

33A

33B

CKET OPENING



28B

33A

34A

CAUGHT UNDER
STITCHING

8

10

12

14

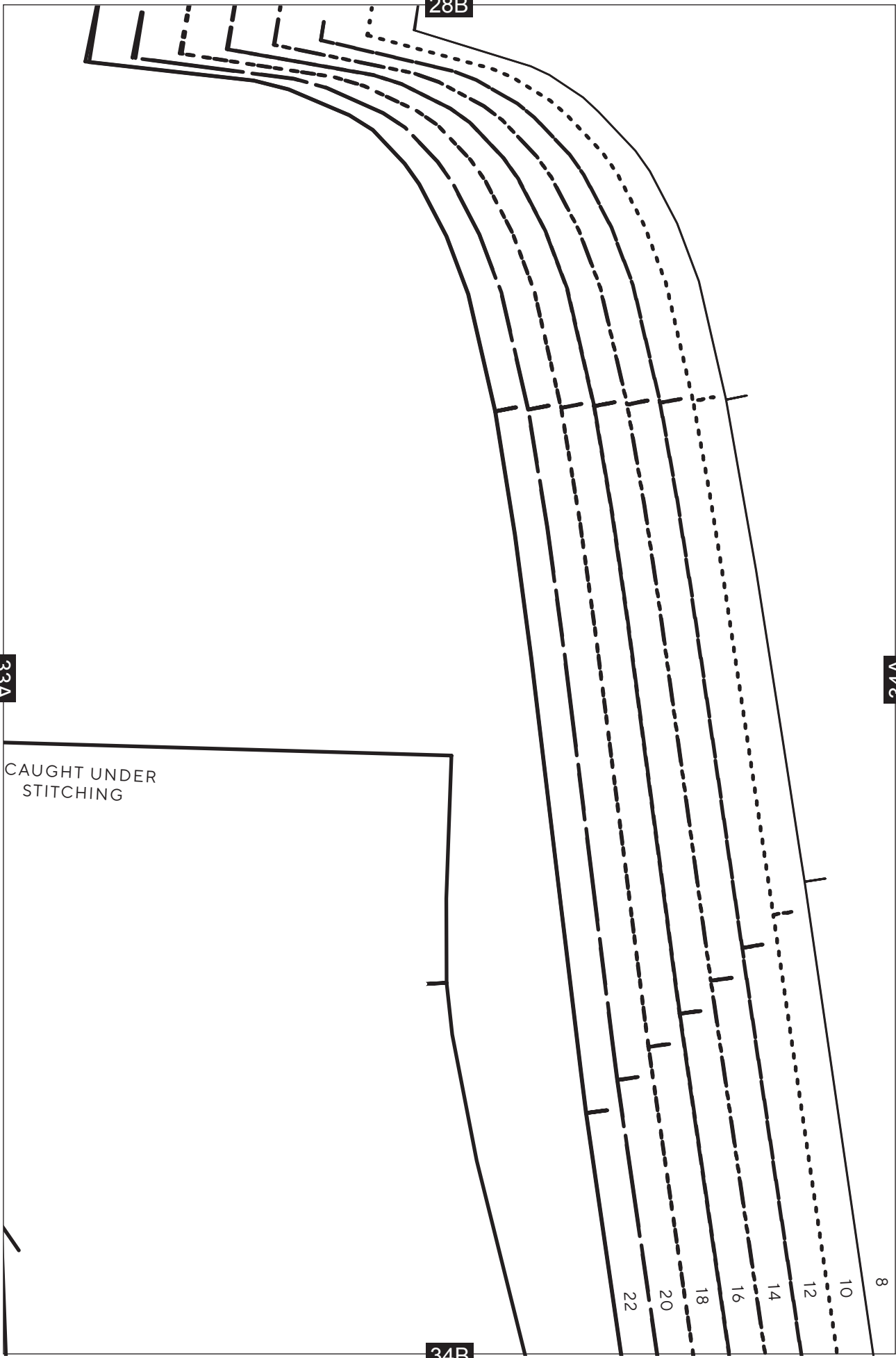
16

18

20

22

34B



Trousers 1A

1 PAIR

35A

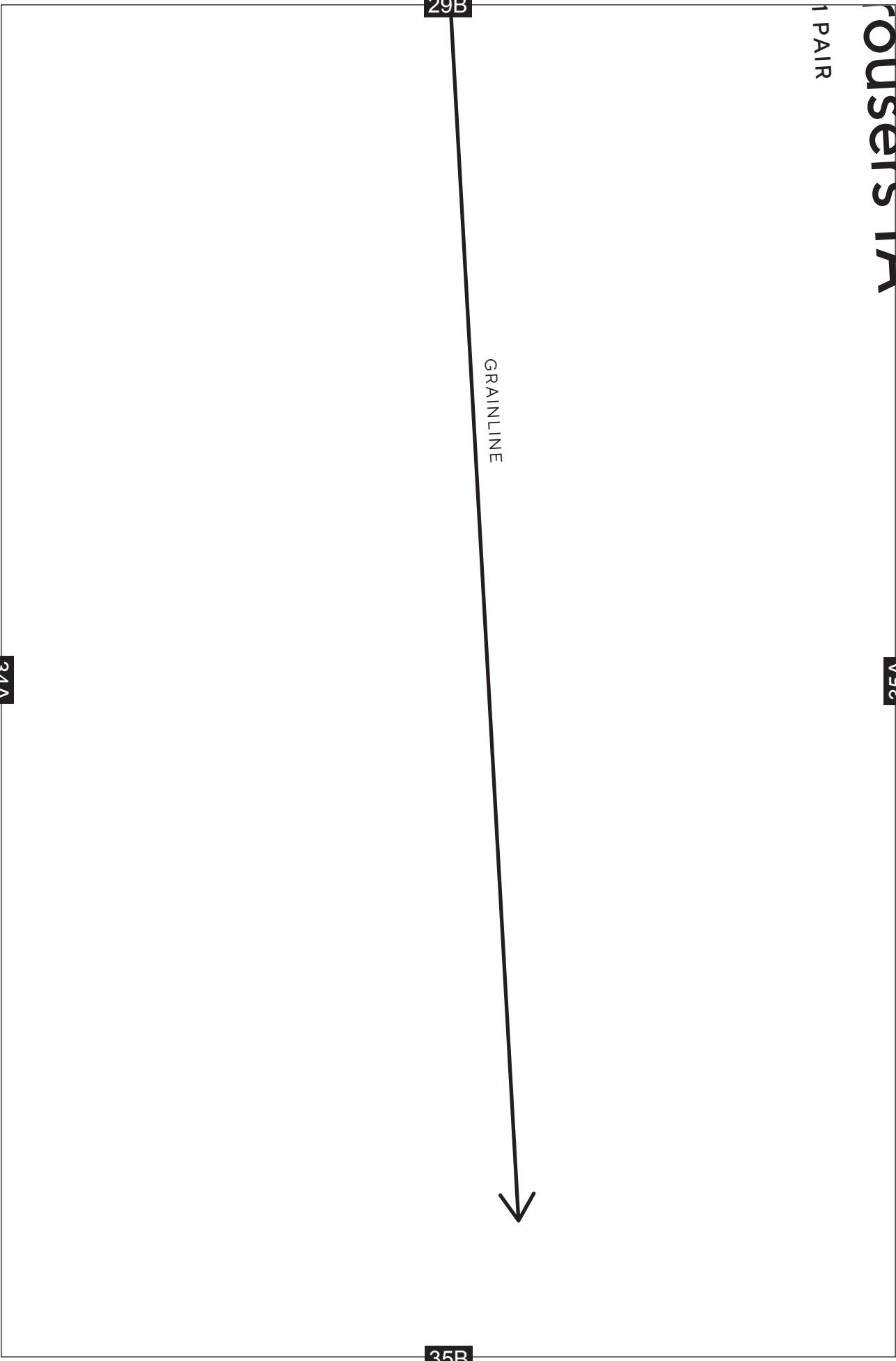
29B

GRAINLINE



35B

34A



bag Shorts

1A

35A

30B

16-CM (6½-IN.)
POCKET OPENING

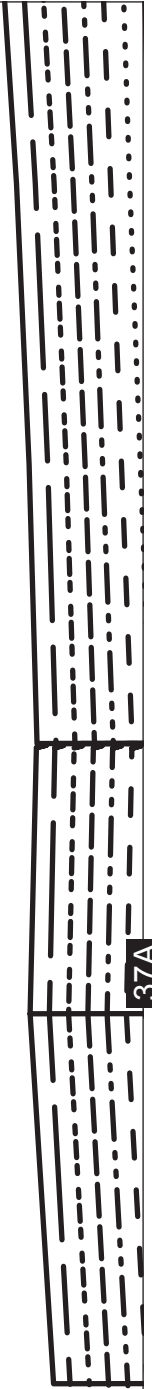
36B



31B

A

37A



32B

A

38A

3.5CM TURN UP

1CM TO TURN UNDER TO NEATEN

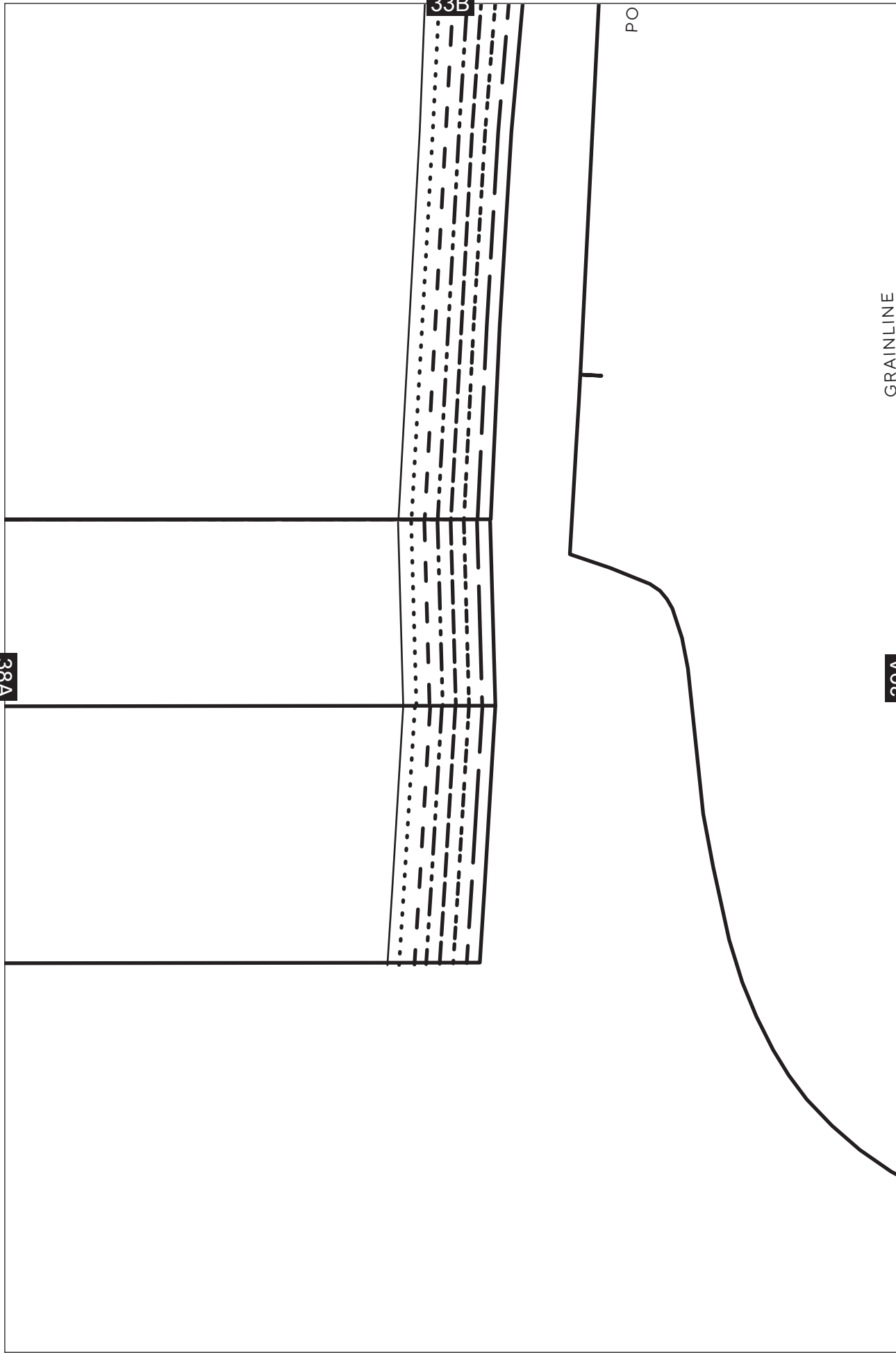
38A

33B

PO

GRAINLINE

39A



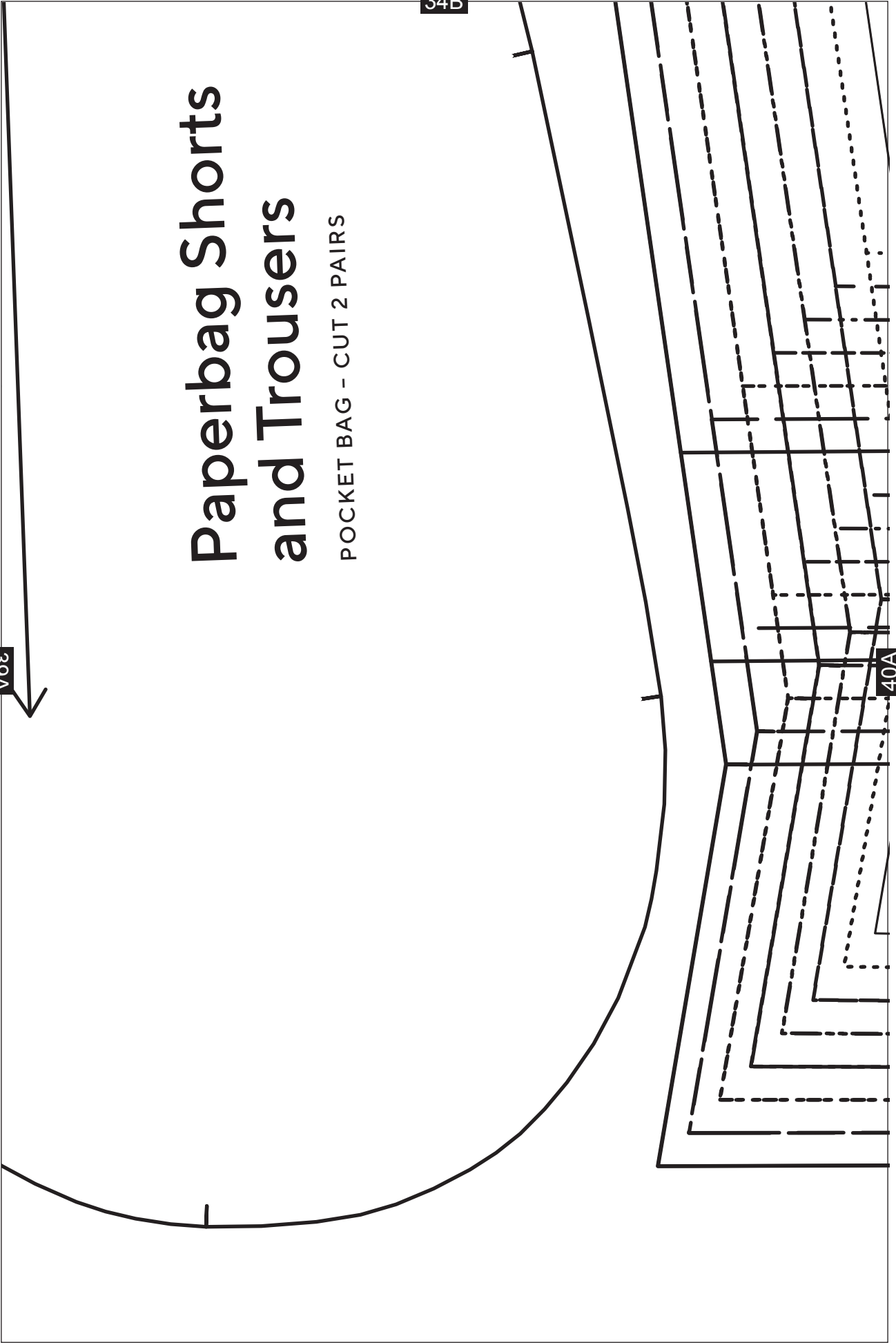
39A

Paperbag Shorts and Trousers

POCKET BAG - CUT 2 PAIRS

34B

40A



STITCHING

LOOP

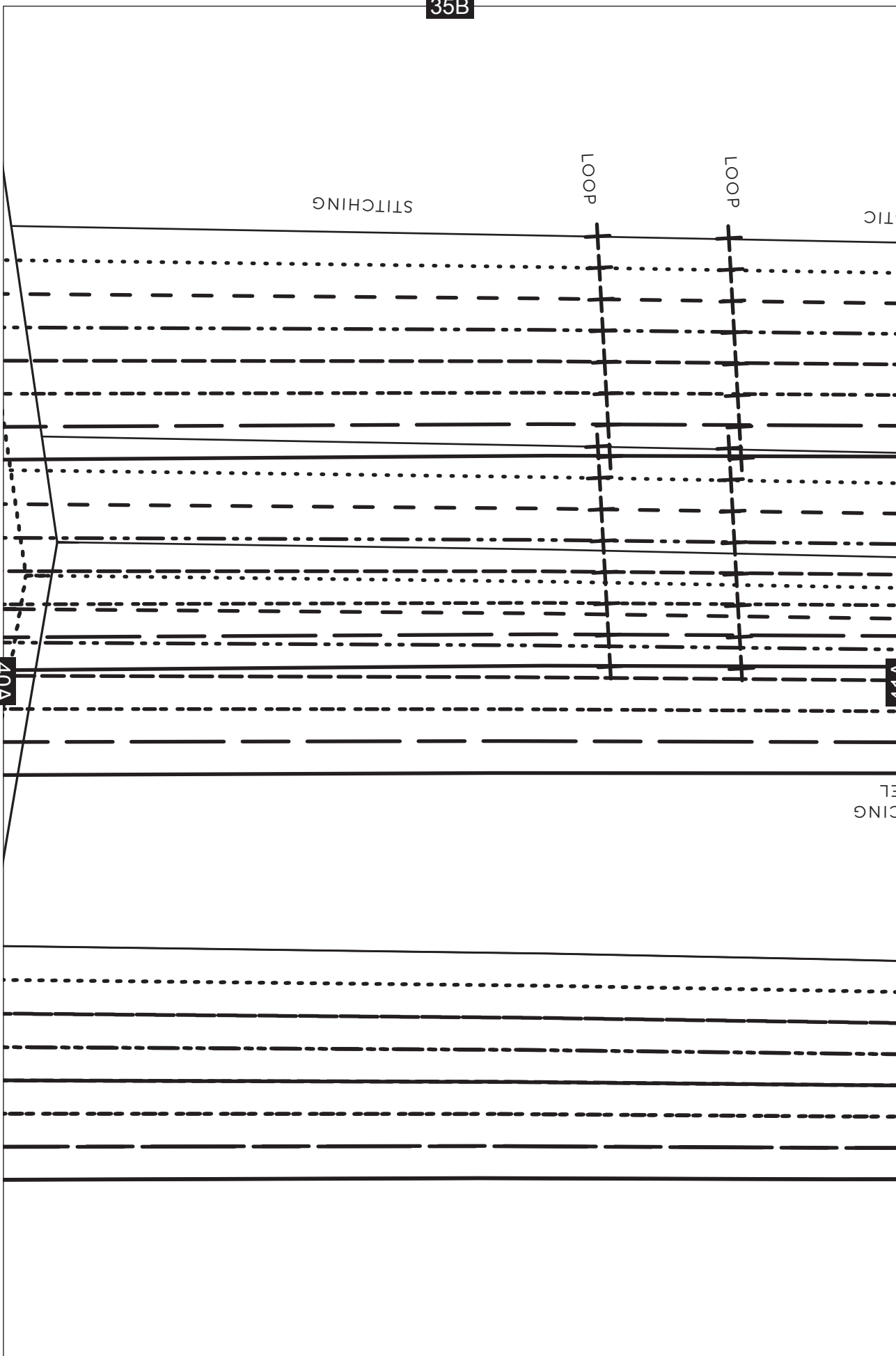
LOOP

STITCHING

40A

41A

STITCHING



36B

CHANNEL FOR ELAS

4-1A

FOLD
GROWN-ON FA
AND CHANN

